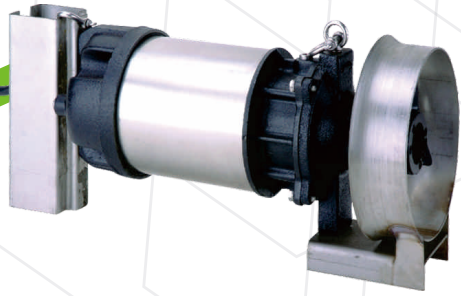


ECT-Mix series 50 / 60 Hz Submersible Mixer Pump



ECT PUMP



SMix



FCMix(2-3HP)

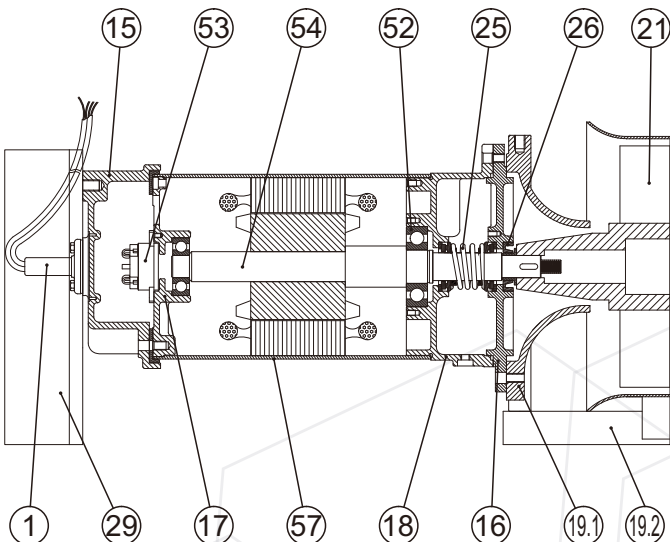
FEATURES

1. Compact design.
2. More efficient bulk flow.
3. The angular contact ball bearing resists to axial force.

APPLICATIONS

1. Biological treatment tanks.
2. Equalization tanks.
3. Lime slurry storage tanks.
4. Ponds and rivers water circulations.
5. Heat exchanger.
6. Ice prevention.

MATERIAL CONSTRUCTION



OPERATING CONDITIONS

1. Ambient temperature : Max.40°C.
2. Liquid temperature : 0°C~40°C.
3. 24 Hr continuously running is allowed.

MOTOR SPEC.

1. Voltage : Only Three phase
2. Frequency : 50HZ / 60HZ
3. Enclosed class : IP68
4. Insulation : F
5. Pole : 4P
6. Built in motor overload protector

*Whole SS304 material pump is also an option.

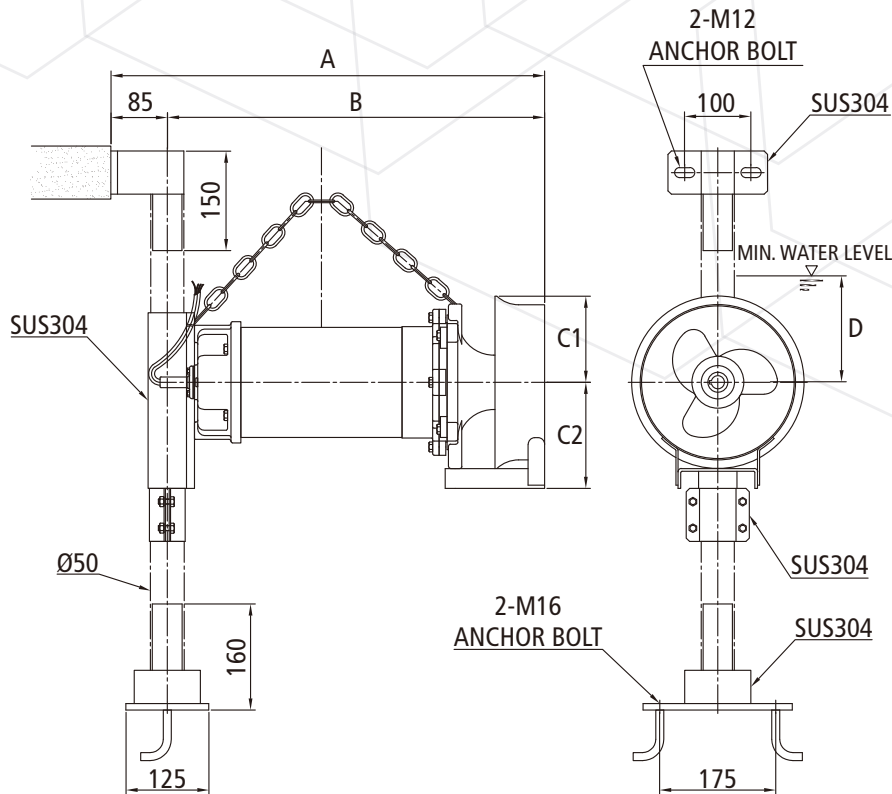
No.	Part	Materials
1	Cable	STOW
15	Motor Upper cover	FC200
16	Bearing Housing	FC200
17	Bracket	FC200
18	Motor Bracket	FC200
19.1	Inlet Housing	FC200
19.2	Jet Ring	SUS304
21	Impeller	FCD450
25	Mechanical Seal	SIC/SIC
26	Oil Seal	NBR
29	Seat For Guide Rail Device	SUS304
52	Bearing	NTN
53	Overload Protector	TI
54	Shaft	SUS410
57	Motor Housing	SUS304/FC200



ECT PUMP

ECT-Mix series Submersible Mixer Pump

DIMENSIONS



SPECIFICATION

Model	Power HP(kW)	Pole P	Phase PH	Capacity M ³ /min	Flow Speed M/s	Dimension(mm)				
						A	B	C1	C2	D
ECT-Mix-3037	1/2 (0.37)	4	3Ø	1.8	1.78	495	410	90	115	200
ECT-Mix-3075	1 (0.75)	4	3Ø	3.2	2.02	535	450	90	115	200
ECT-Mix-3150	2 (1.50)	4	3Ø	4.5	2.50	654	569	130	160	250
ECT-Mix-3220	3 (2.20)	4	3Ø	6.8	3.50	654	569	130	160	250